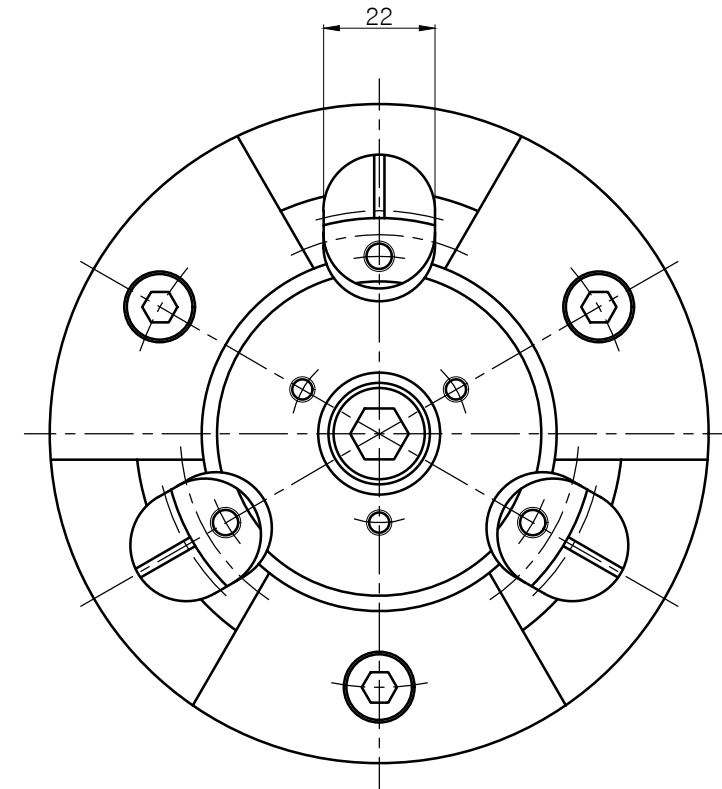
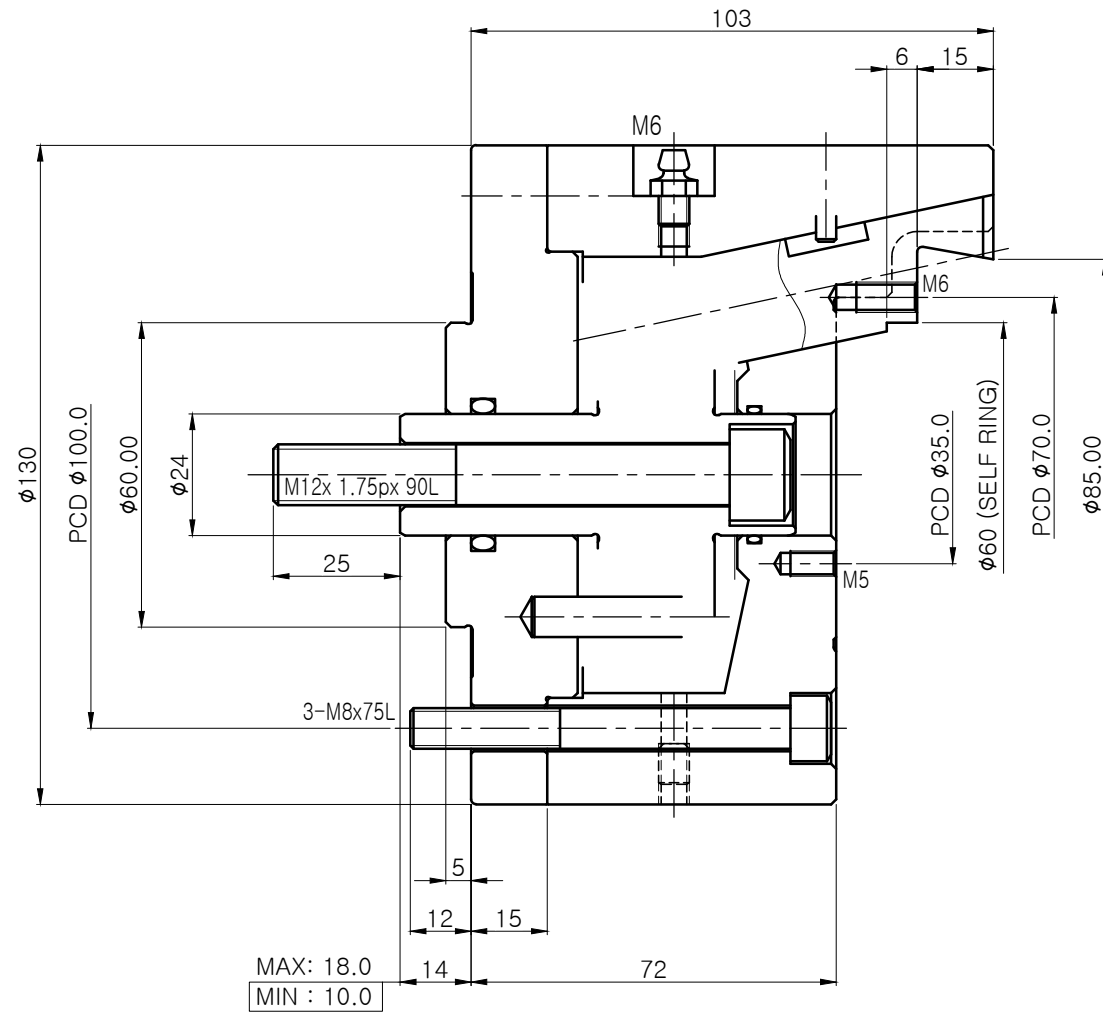



No.	REVISIONS	DATE	DRAWN	APP.
①				
②				



CHUCK SPEC.		
Plunger Stroke	8 mm	
JAW STROKE(Dia)	3.4 mm	
Max. Drawbar Pull	1,200 kgf	
Clamping Force	2,250 kgf	
Max. Speed(r.p.m)	5,000 rpm	
Weight	8 kg	
GD ²	0.067kgf.m ²	
Chucking Diameter	Pin Jaw	Top Jaw
	65~80	15~60

1	BLANK CHUCK	STD.	POL-80	1SET	-
NO.	TITLE OF ITEM	MATERIAL	SIZE & SPEC.	Q'TY	NOTE
TITLE	PIN ARBOR CHUCK (POL-80)		PART NAME	ASSEMBLY DRAWING	
DWG. NO.	POL-80		AGENCY	-	
CODE NO.	-		USER	-	
 SCALE 1 : 1	Approved	Checked	Designed	