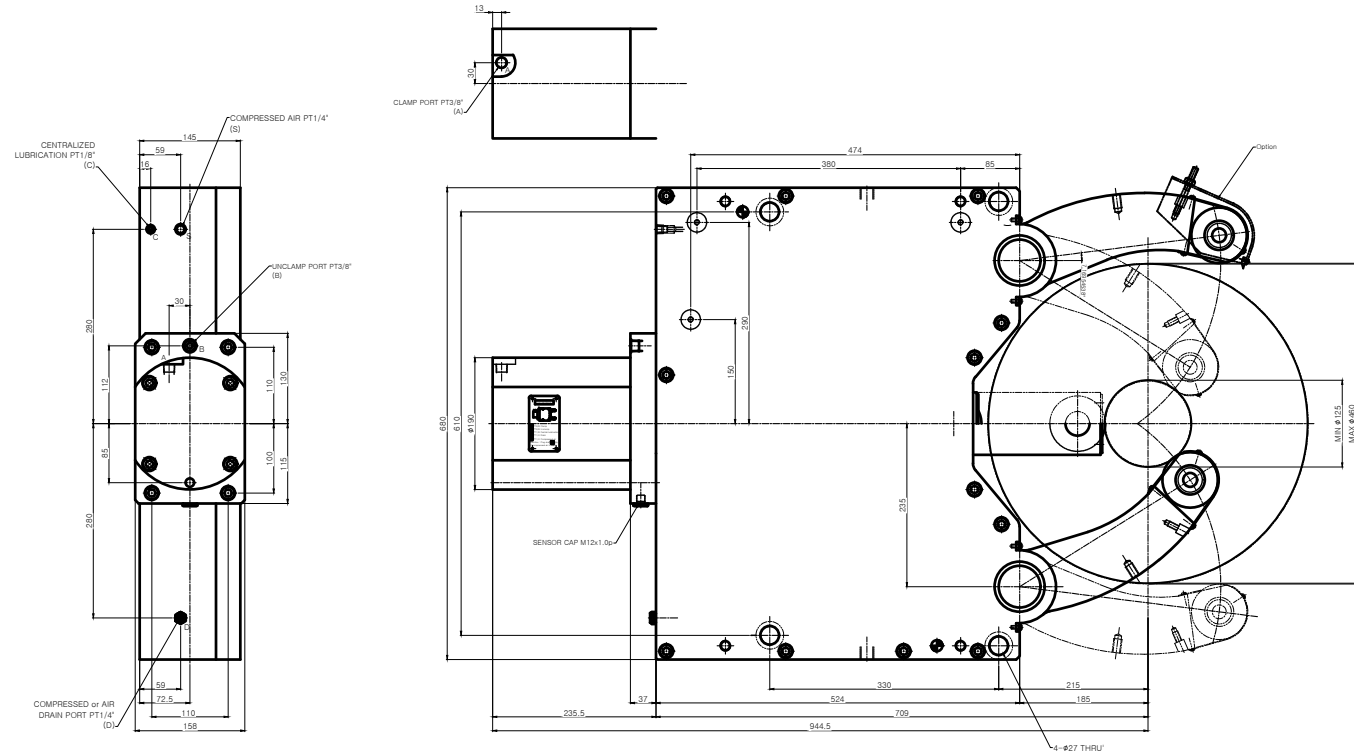


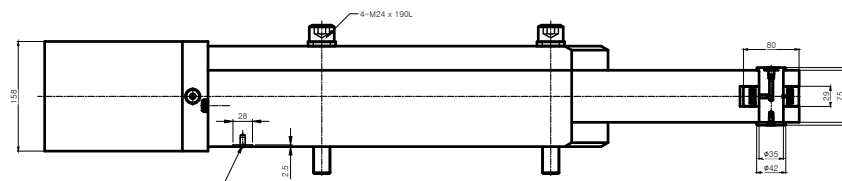
A0 x 2



NOTE
 1. Proximity Sensor는 Option 사양임.
 2. Arm에 조립되는 Roller는 cylindrical type이 기본 사양임.

SPECIFICATION	
CENTERING RANGE	φ125-φ460 mm
PISTON AREA	132 mm ²
OPERATING PRUSSURE	6~70 kgf/cm ²
MAX.CLAMPING FORCE/ROLLER	3000 kgf
CENTERING ACCURACY WITHIN THE WHOLE RANGE	0.06 mm
REPEATABILITY ACCURACY	0.01 mm
MAX.ROLLER SURFACE SPEED	700 m/min
MASS APPROX	420 kg

* Option of central oil lubrication
 - Oil : ISO VG68
 - For heavy working conditions and high build up of swarf
 - Lubrication intervals 2 ~ 5 min
 - Operating pressure Min.10 bar, Max.40 bar
 - The use of our separate complete lubrication unit with timer control is recommended



APPLICATION WORK	1	ASS'Y	STD	STA-6	1SET	-
MACHINE SPEC	-	-	-	-	-	-
OPERATION	-	-	-	-	-	-
ACCURACY		CUTTING CONDITION		DWG. NO.	STA-6	AGENCY
ROUGHNESS	T.J.R. RAUPEL SURF (N)	T.J.R. DEPTH OF CUT (I)	mm	CODE NO.	-	USER
PARALLELISM	T.J.R. FEED (I)	m/rev				DATE
SQUARENESS	T.J.R. SURF OF GROOVE (Ds)	kg/m ²				
FLATNESS	T.J.R. MATERIAL			SCALE	1:1	Approved
CYLINDRICITY	T.J.R. HARDNESS					Checked
						Designed

