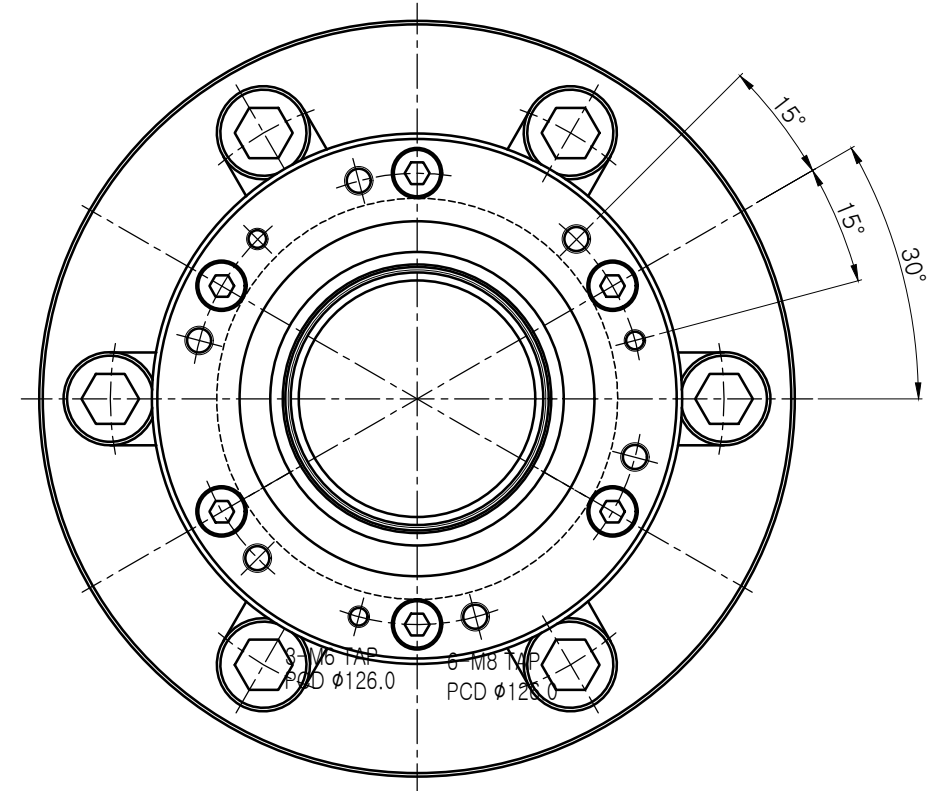
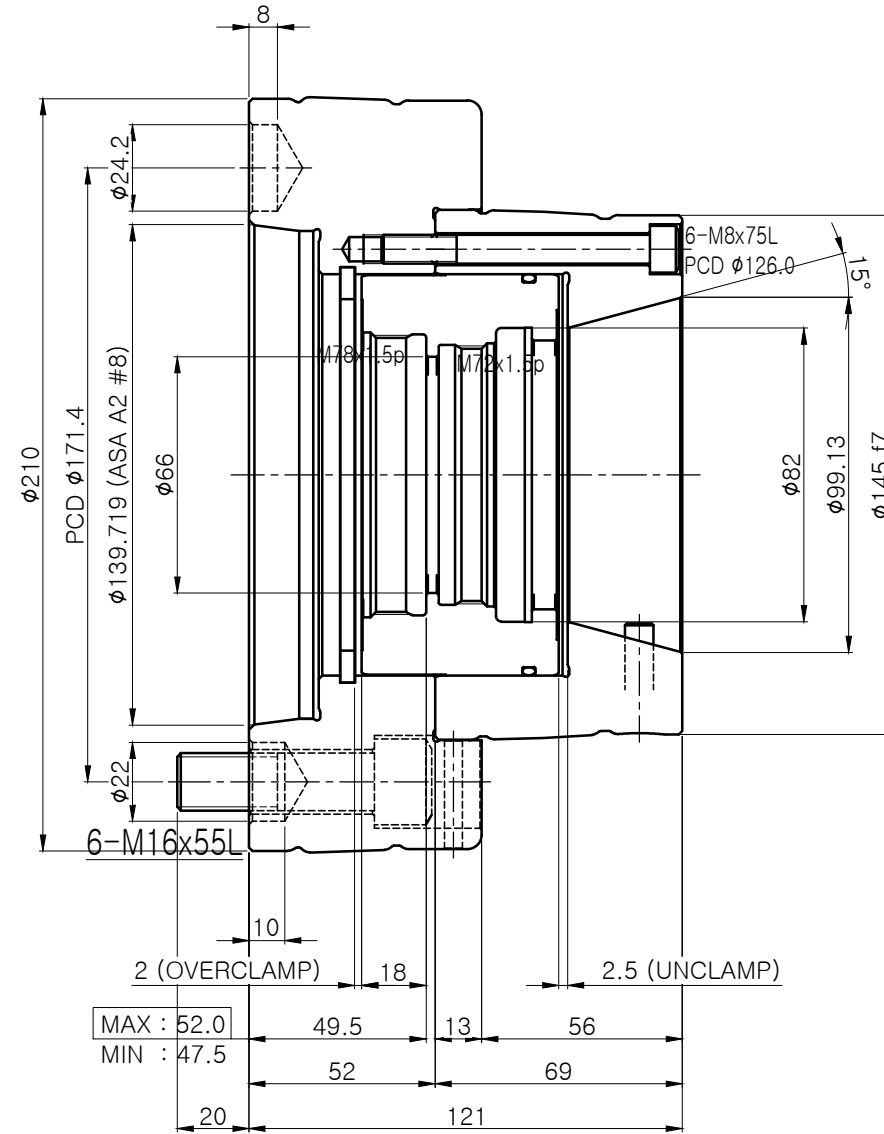
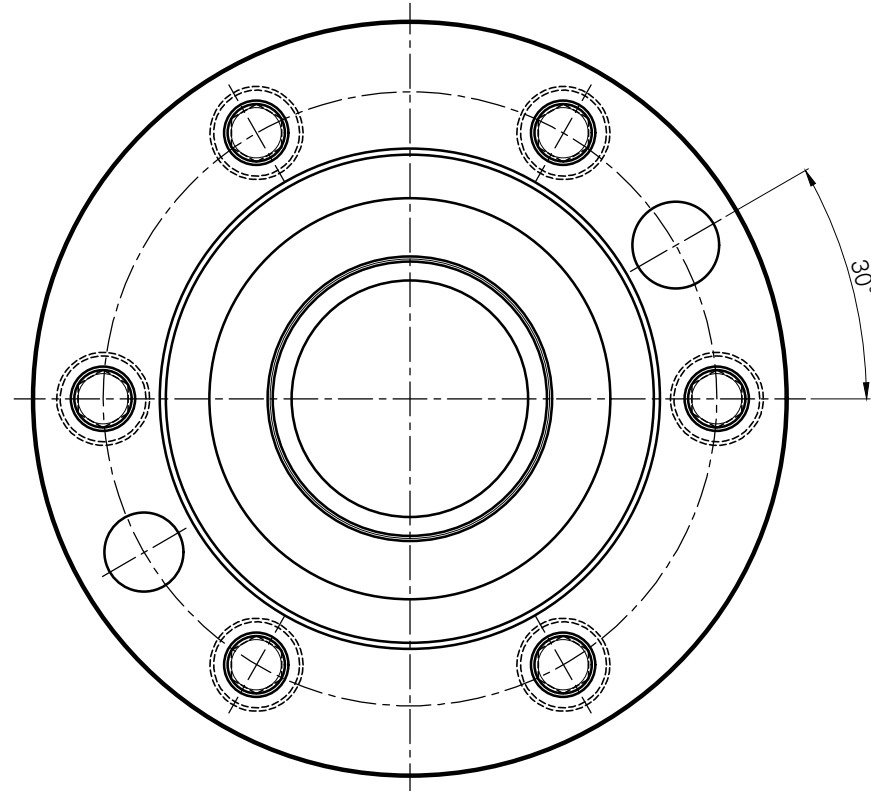
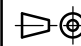



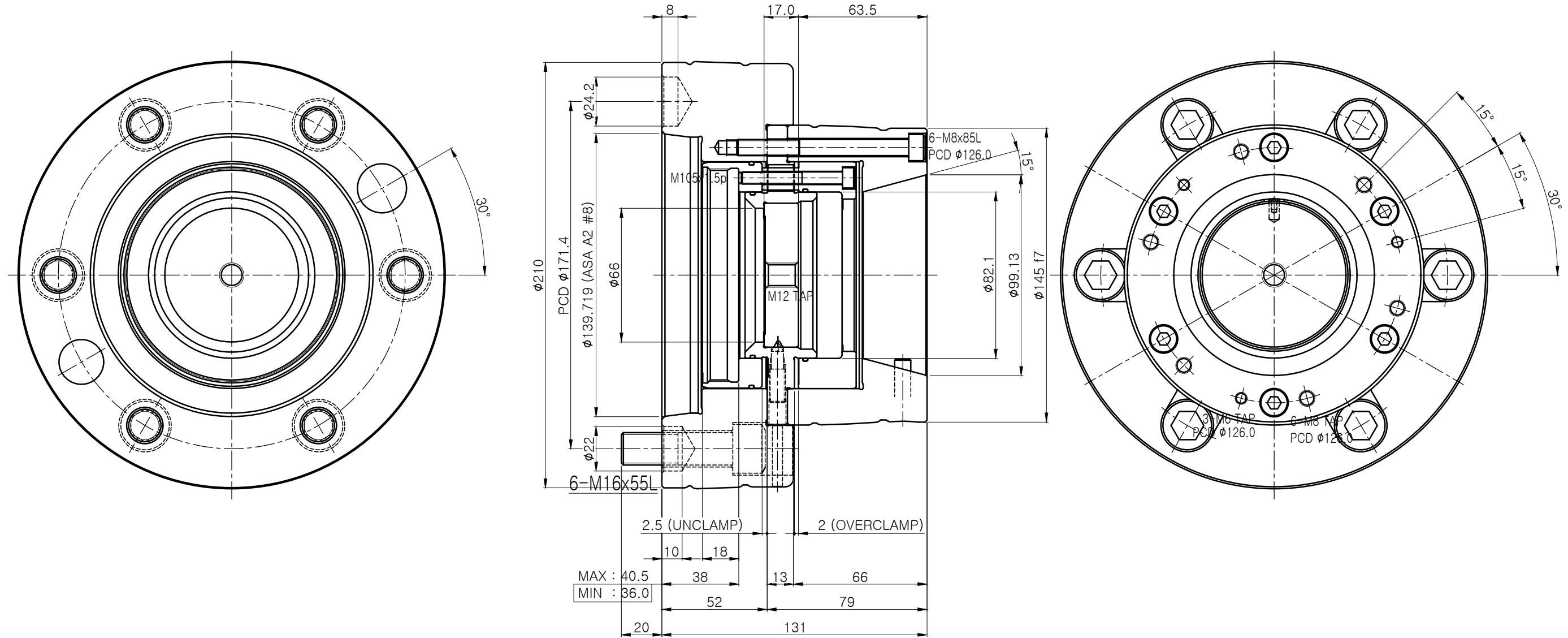
No.	REVISIONS	DATE	DRAWN	APP.
①				
②				



CHUCK SPEC.	
CHUCK SPEC.	CORH-65M8
PLUNGER STROKE	4.5 mm
JAW STROKE	φ1.6 mm
MAX. INPUT FORCE	4,500 kgf
CLAMPING FORCE	10,700 kgf
MAX. SPEED	6,000 rpm
MOMENT OF INERTIAL	. kgf.m²
WEIGHT	17 kg

NO.	TITLE OF ITEM	MATERIAL	SIZE & SPEC.	Q'TY	NOTE
TITLE	OUTSIDE COLLET CHUCK (CORH-65M8)	PART NAME	ASSEMBLY DRAWING		
DWG. NO.	CORH-65M8-00	AGENCY			
CODE NO.		USER			
 SCALE 1 : 1	Approved	Checked	Designed	DATA	
					

No.	REVISIONS	DATE	DRAWN	APP.
①				
②				



CHUCK SPEC.	
CHUCK SPEC.	CORH-65B8
PLUNGER STROKE	4.5 mm
JAW STROKE	φ1.6 mm
MAX. INPUT FORCE	4,500 kgf
CLAMPING FORCE	10,700 kgf
MAX. SPEED	6,000 rpm
MOMENT OF INERTIAL	. kgf.m ²
WEIGHT	18.5 kg

NO.	TITLE OF ITEM	MATERIAL	SIZE & SPEC.	Q'TY	NOTE
TITLE	OUTSIDE COLLET CHUCK (CORH-65B8)	PART NAME	ASSEMBLY DRAWING		
DWG. NO.	CORH-65B8-00	AGENCY			
CODE NO.		USER			
		DATA			
SCALE	1 : 1	Approved	Checked	Designed	