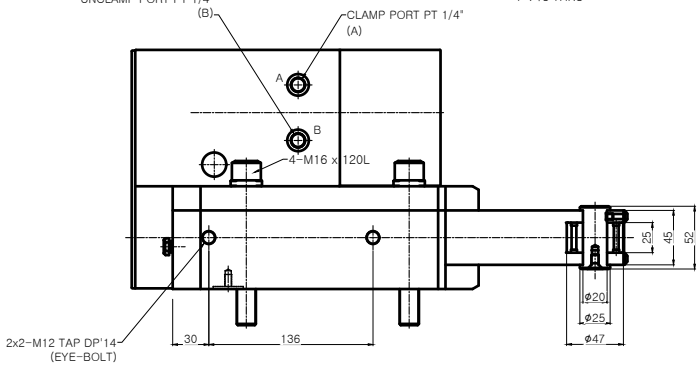
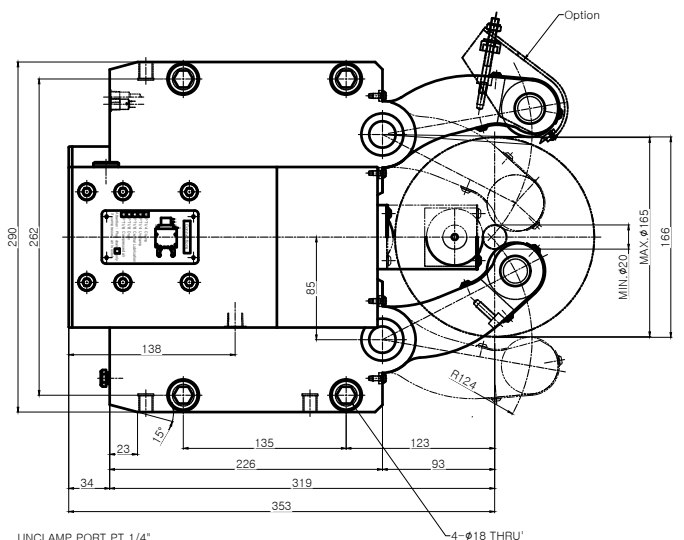
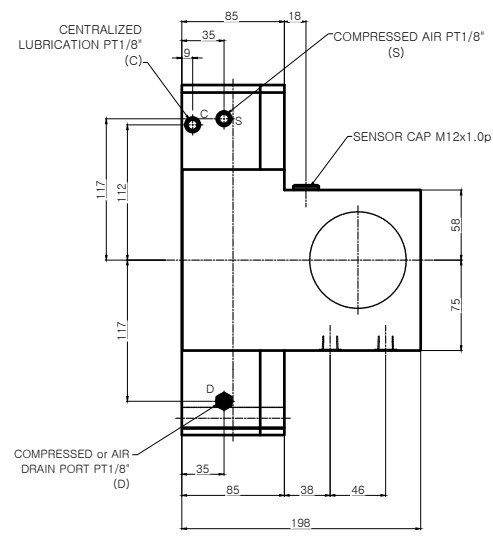


A0



**NOTE**  
 1. Proximity Sensor는 Option 사양임.  
 2. Arm에 조립되는 Roller는 cylindrical type이 기본 사양임.

SPECIFICATION	
CENTERING RANGE	φ20~φ165 mm
PISTON AREA	50cm <sup>2</sup>
OPERATING PRUSSURE	8~60 kgf/cm <sup>2</sup>
MAX.CLAMPING FORCE/ROLLER	1000 kgf
CENTERING ACCURACY WITHIN THE WHOLE RANGE	0.04 mm
REPEATABILITY ACCURACY	0.007 mm
MAX.ROLLER SURFACE SPEED	725 m/min
MASS APPROX	46 kg

**\* Option of central oil lubrication**  
 - Oil : ISO VG68  
 - For heavy working conditions and high build up of swarf  
 - Lubrication intervals 2 ~ 5 min  
 - Operating pressure Min.10 bar, Max.40 bar  
 - The use of our separate complete lubrication unit with timer control is recommended

APPLICATION WORK	-	01	ASS'Y	STD	STAB-3.1	1SET	-
MACHINE SPEC	-	NO.	TITLE OF ITEM	MATERIAL	SIZE & SPEC	QTY	NOTE
OPERATION	-	TITLE		STEADY REST (STAB-3.1)	PART NAME	ASSEMBLY DRAWING	
ACCURACY	CUTTING CONDITION	DWG. NO.	STAB-3.1		AGENCY		
ROUNDNESS (R)	T.J.R. PERPENDICULARITY (N)	CODE NO.			USER		
PARALLELISM (//)	T.J.R. FEED (f)			DATE			
SQUARENESS (⊥)	T.J.R. DEPTH OF CUT (l)						
FLATNESS (Z)	T.J.R. BACKLASH (Dsk)						
CYLINDRICITY (R)	T.J.R. MATERIAL						
	T.J.R. HARDNESS						
SCALE		1 : 1					
		Approved		Checked		Designed	

**SAMCHULLY**