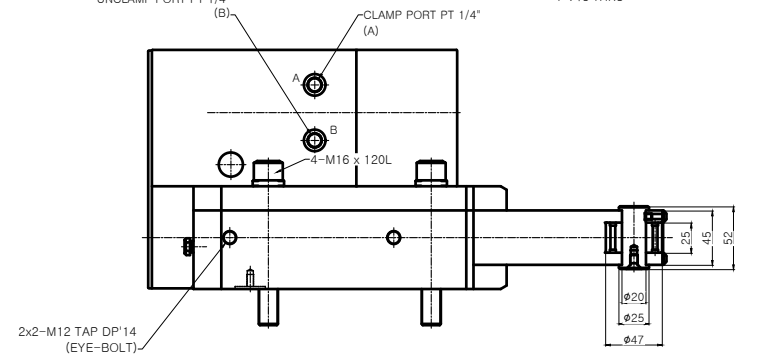
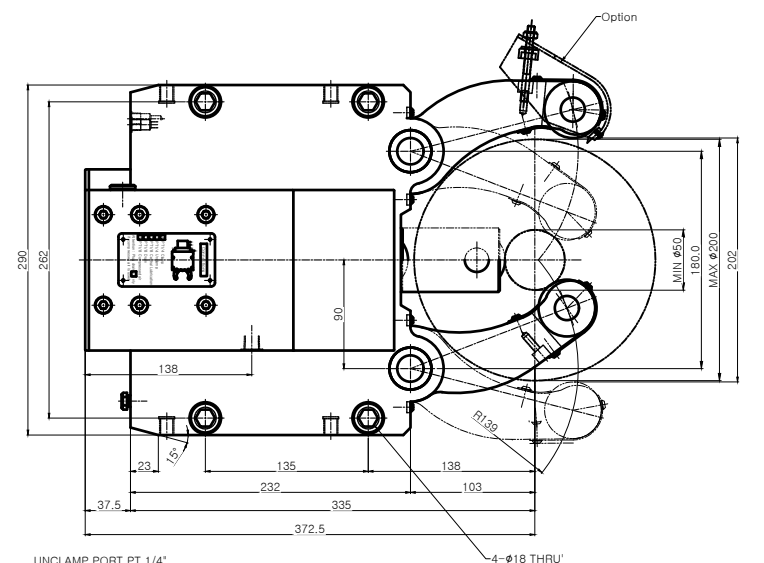
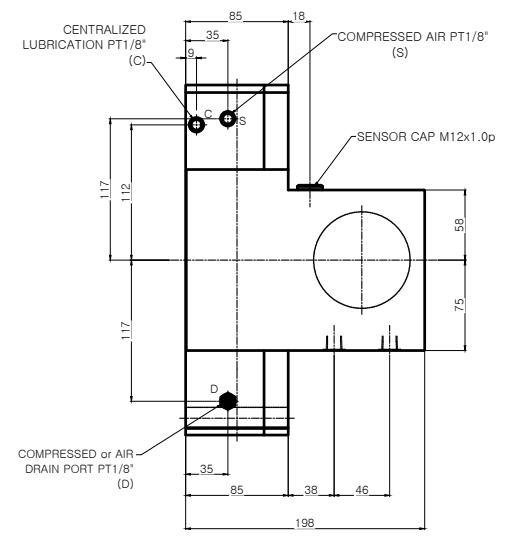


A0



NOTE
 1. Proximity Sensor는 Option 사양임.
 2. Arm에 조립되는 Roller는 cylindrical type이 기본 사양임.

SPECIFICATION	
CENTERING RANGE	φ50-φ200 mm
PISTON AREA	50cm ²
OPERATING PRUSSURE	8-60 kgf/cm ²
MAX.CLAMPING FORCE/ROLLER	1000 kgf
CENTERING ACCURACY WITHIN THE WHOLE RANGE	0.04 mm
REPEATABILITY ACCURACY	0.007 mm
MAX.ROLLER SURFACE SPEED	725 m/min
MASS APPROX	48 kg

*** Option of central oil lubrication**
 - Oil : ISO VG68
 - For heavy working conditions and high build up of swarf
 - Lubrication intervals 2 ~ 5 min
 - Operating pressure Min.10 bar, Max.40 bar
 - The use of our separate complete lubrication unit with timer control is recommended

APPLICATION WORK	-	01	ASS'Y	STD	STAB-3.2	1SET	-
MACHINE SPEC	-	NO.	TITLE OF ITEM	MATERIAL	SIZE & SPEC	QTY	NOTE
OPERATION	-	TITLE	STEADY REST (STAB-3.2)	PART NAME	ASSEMBLY DRAWING		
ACCURACY	CUTTING CONDITION	DWG. NO.	STAB-3.2	AGENCY			
ROUNDNESS (R)	T.J.R. SUPERFINISH (N)	CODE NO.		USER			
PARALLELISM (//)	T.J.R. FEED (f)			DATE			
SQUARENESS (⊥)	T.J.R. DEPTH OF CUT (t)						
FLATNESS (⌞)	T.J.R. FEED (f)						
CYLINDRICITY (R)	T.J.R. MATERIAL	SCALE	1:1	Approved	Checked	Designed	SAMCHULLY