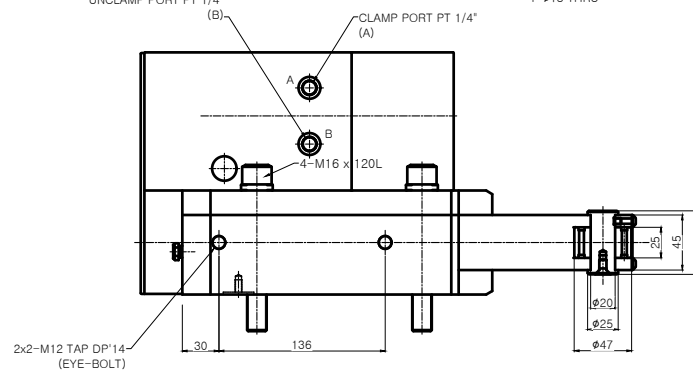
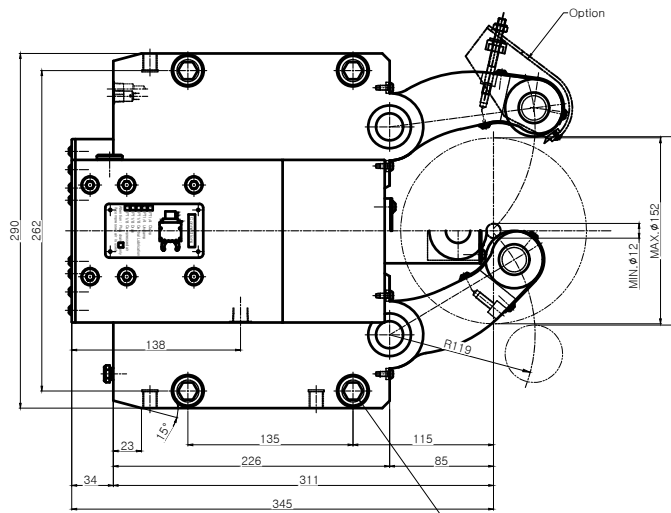
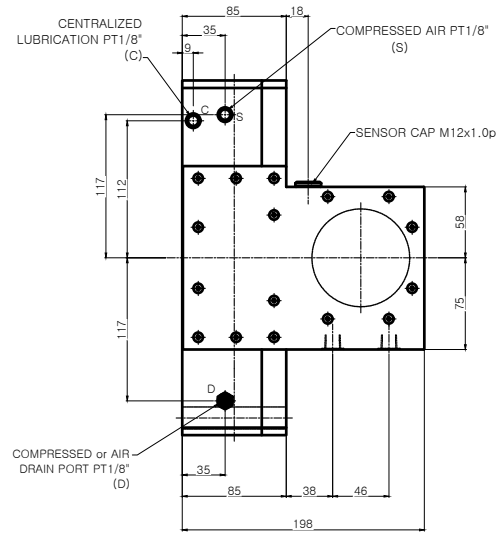


A0



NOTE

1. Proximity Sensor는 Option 사양임.
2. Arm에 조립되는 Roller는 cylindrical type이 기본 사양임.

SPECIFICATION	
CENTERING RANGE	φ12~φ152 mm
PISTON AREA	50cm ²
OPERATING PRUSSURE	8~60 kgf/cm ²
MAX. CLAMPING FORCE/ROLLER	1000 kgf
CENTERING ACCURACY WITHIN THE WHOLE RANGE	0.04 mm
REPEATABILITY ACCURACY	0.007 mm
MAX. ROLLER SURFACE SPEED	725 m/min
MASS APPROX	45 kg

*** Option of central oil lubrication**

- Oil : ISO VG68
- For heavy working conditions and high build up of swarf
- Lubrication Intervals 2 ~ 5 min
- Operating pressure Min. 10 bar, Max. 40 bar
- The use of our separate complete lubrication unit with timer control is recommended

APPLICATION WORK		01 ASS'Y		STD	STAB-3	ISET	-
MACHINE SPEC.	NO.	TITLE OF ITEM		MATERIAL	SIZE & SPEC.	QTY.	NOTE
OPERATION		TITLE		STEADY REST (STAB-3)	PTH/SHK	ASSEMBLY DRAWING	
ACCURACY	CUTTING CONDITION	DWG. NO.		STAB-3	AGENCY		
DIRECTIVITY	T.L.R. PROGRESSION (N)	r.p.m			USER		
ROUGHNESS	T.L.R. DEPTH OF CUT (T)	mm			DATE		
QUALITY	T.L.R. FEED (F)	m/rev					
SQUARENESS	T.L.R. PROGRESSIVE (K)	kg/mm ²					
FLATNESS	T.L.R. MATERIAL						
CYLINDRICITY	T.L.R. HARDNESS						
		SCALE	1:1	Approved	Checked	Designed	