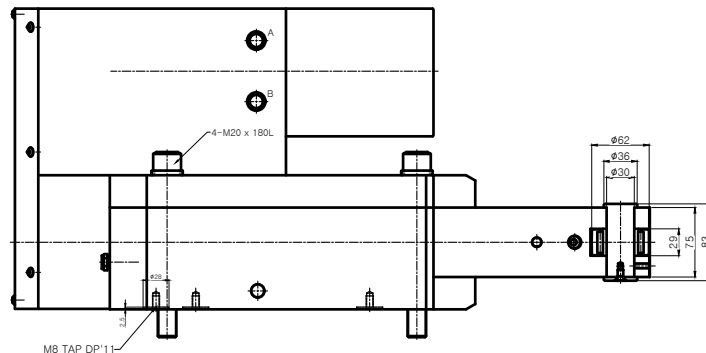
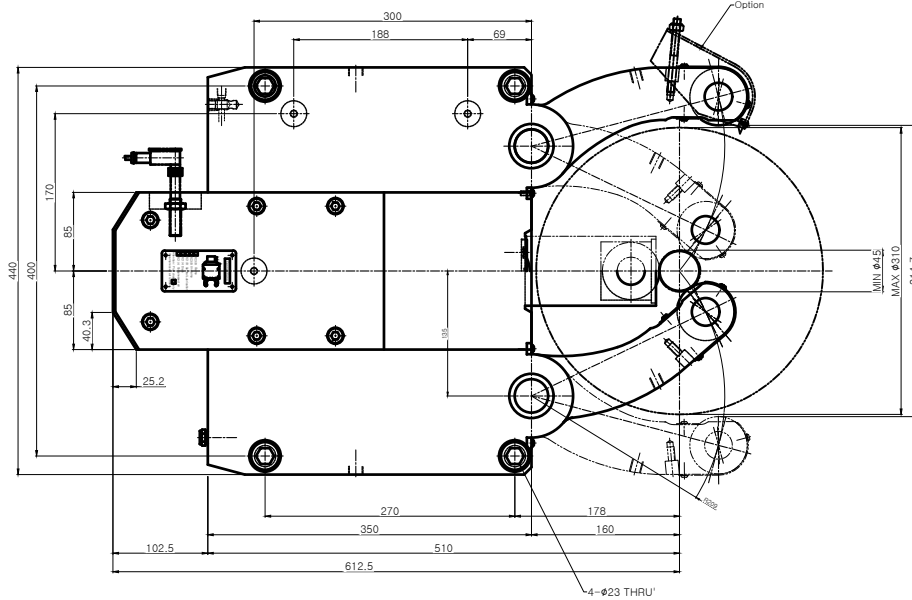
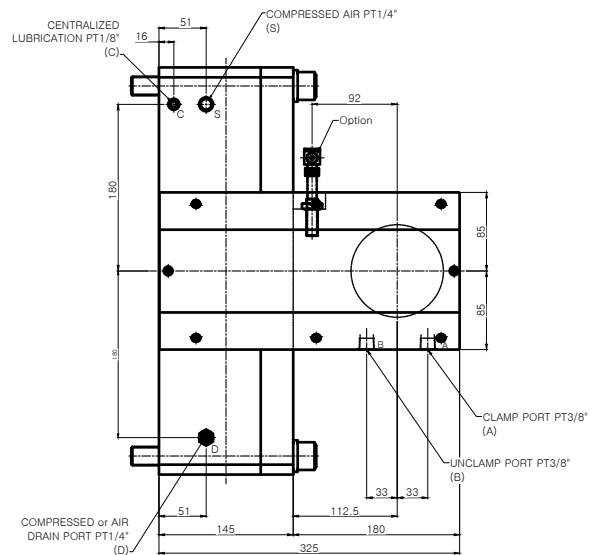


A0x1.5



NOTE
 1. Proximity Sensor는 Option 사양임.
 2. Arm에 조립되는 Roller는 cylindrical type이 기본 사양임.

SPECIFICATION	
CENTERING RANGE	φ45-φ310 mm
PISTON AREA	78 mm ²
OPERATING PRUSSURE	8-80 kgf/cm ²
MAX CLAMPING FORCE/ROLLER	2000 kgf
CENTERING ACCURACY WITHIN THE WHOLE RANGE	0.06 mm
REPEATABILITY ACCURACY	0.01 mm
MAX.ROLLER SURFACE SPEED	700 m/min
MASS APPROX	175 kg

* Option of central oil lubrication
 - Oil : ISO VG68
 - For heavy working conditions and high build up of swarf
 - Lubrication intervals 2 ~ 5 min
 - Operating pressure Min.10 bar, Max.40 bar
 - The use of our separate complete lubrication unit with timer control is recommended

APPLICATION WORK	-	01	ASS'Y	STD	STAB-5	1SET	-
MACHINE SPEC	-	NO.	TITLE OF ITEM	MATERIAL	SIZE & SPEC	QTY	NOTE
OPERATION	-	TITLE		STEADY REST	PART NAME	ASSEMBLY DRAWING	
ACCURACY		CUTTING CONDITION		DWG. NO.	STAB-5	AGENCY	
ROUGHNESS	0.1	T.J.R	FEED PER REV (N)	CODE NO.	-	USER	
PARALLELISM	0.1	T.J.R	DEPTH OF CUT (I)	DATE			
SQUARENESS	0.1	T.J.R	FEED (I)	SCALE			
FLATNESS	0.1	T.J.R	DEPTH OF CUT (D)	1:1	Approved	Checked	Designed
CYLINDRICITY	0.1	T.J.R	MATERIAL	SAMCHULLY			
		T.J.R	HARDNESS				