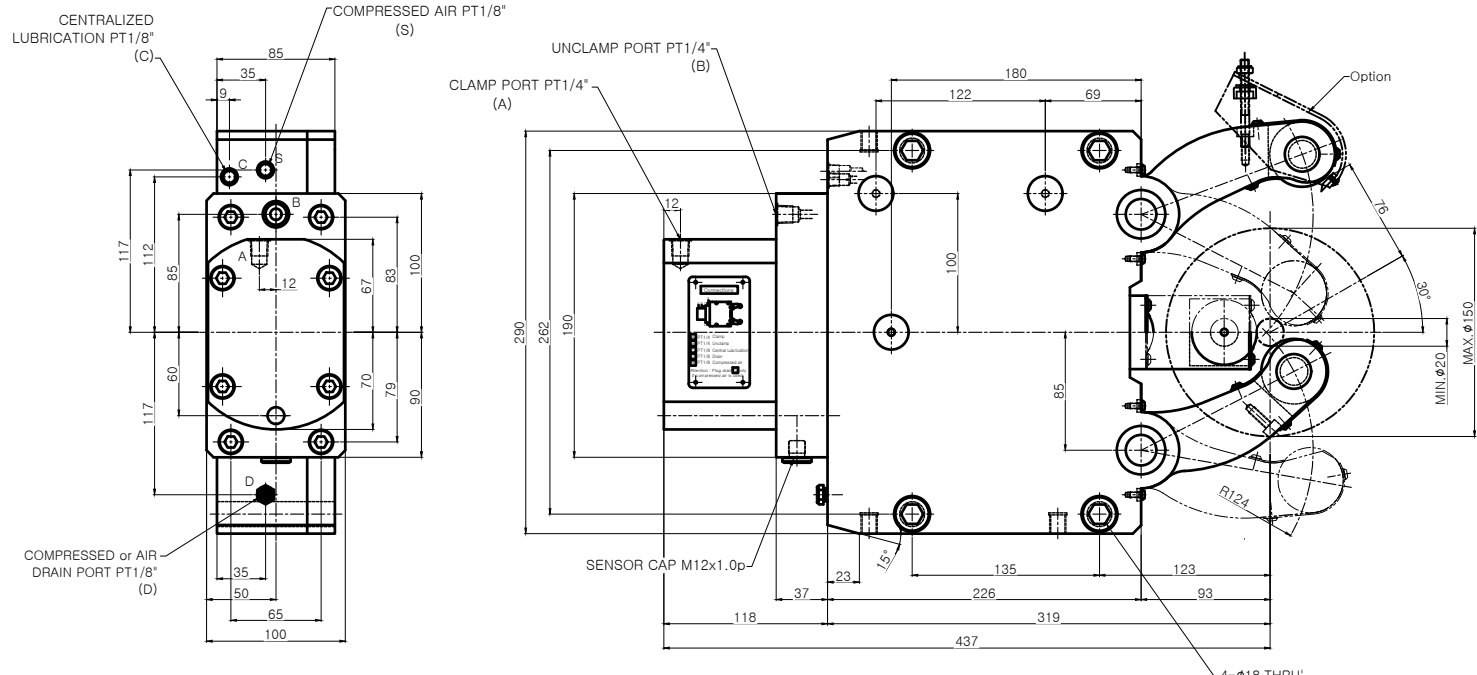


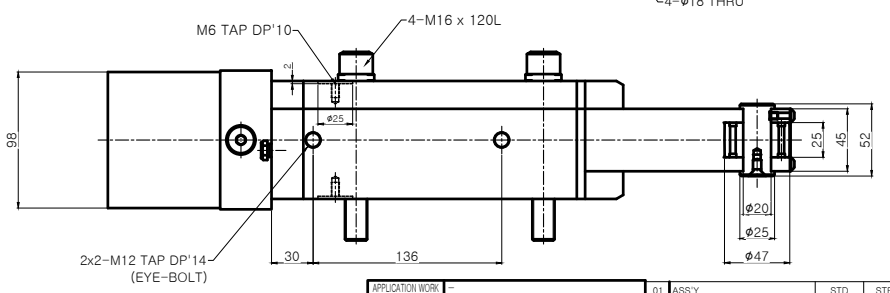
A0



NOTE
 1. Proximity Sensor는 Option 사양임.
 2. Arm에 조립되는 Roller는 cylindrical type이 기본 사양임.

SPECIFICATION	
CENTERING RANGE	φ20~φ150 mm
PISTON AREA	50cm ²
OPERATING PRUSSURE	8~60 kgf/cm ²
MAX.CLAMPING FORCE/ROLLER	1000 kgf
CENTERING ACCURACY WITHIN THE WHOLE RANGE	0.04 mm
REPEATABILITY ACCURACY	0.007 mm
MAX.ROLLER SURFACE SPEED	725 m/min
MASS APPROX	40 kg

*** Option of central oil lubrication**
 - Oil : ISO VG68
 - For heavy working conditions and high build up of swarf
 - Lubrication intervals 2 ~ 5 min
 - Operating pressure Min.10 bar, Max.40 bar
 - The use of our separate complete lubrication unit with timer control is recommended



APPLICATION WORK	NO.	ASS'Y	STD	STRA-3.1	1SET	-
MACHINE SPEC	-	TITLE OF ITEM	MATERIAL	SIZE & SPEC	QTY	NOTE
OPERATION	-	TITLE	STEADY REST (STRA-3.1)	PART NAME	ASSEMBLY DRAWING	
ACCURACY	CUTTING CONDITION	DWG. NO.	STRA-3.1	AGENCY		
ROUGHNESS	T.I.R. SURFACE FINISH (N)	CODE NO.		USER		
PARALLELISM	T.I.R. DEPTH OF CUT (L)			DATE		
SQUARENESS	T.I.R. FEED (f)					
FLATNESS	T.I.R. DEPTH OF CUT (L)					
CYLINDRICITY	T.I.R. MATERIAL	SCALE				
	T.I.R. HARDNESS	1:1	Approved	Checked	Designed	SAMCHULLY