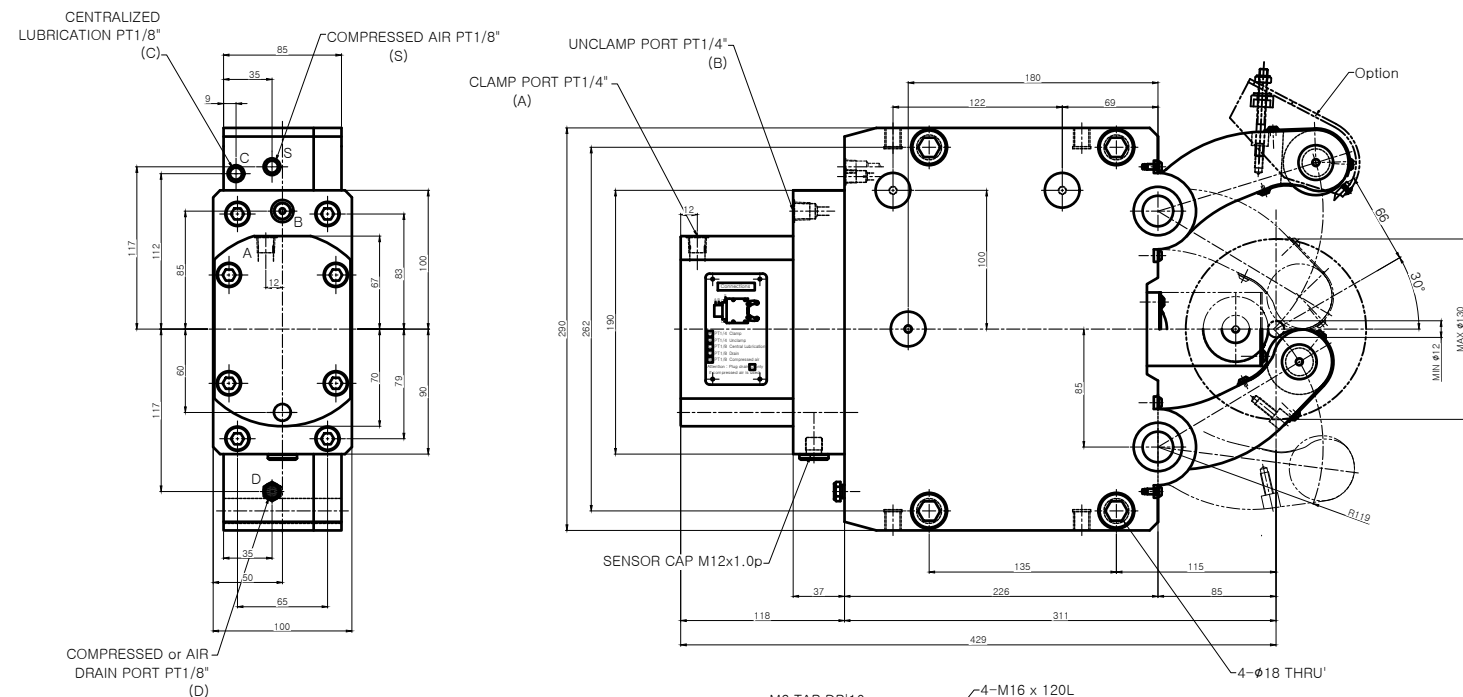


A0



NOTE

1. Proximity Sensor는 Option 사양임.
2. Arm에 조립되는 Roller는 cylindrical type이 기본 사양임.

SPECIFICATION	
CENTERING RANGE	φ12~φ130 mm
PISTON AREA	50cm ²
OPERATING PRUSSURE	8~60 kgf/cm ²
MAX.CLAMPING FORCE/ROLLER	1000 kgf
CENTERING ACCURACY WITHIN THE WHOLE RANGE	0.04 mm
REPEATABILITY ACCURACY	0.007 mm
MAX.ROLLER SURFACE SPEED	725 m/min
MASS APPROX	39 kg

- * Option of central oil lubrication
- Oil : ISO VG68
 - For heavy working conditions and high build up of swarf
 - Lubrication intervals 2 ~ 5 min
 - Operating pressure Min.10 bar, Max.40 bar
 - The use of our separate complete lubrication unit with timer control is recommended

APPLICATION WORK		01 ASS'Y		STD	STRA-3	1SET	-
MACHINE SPEC		NO.		TITLE OF ITEM	MATERIAL	SIZE & SPEC	QTY
OPERATION		-		TITLE	STEADY REST (STRA-3)	PART NAME	ASSEMBLY DRAWING
ACCURACY	CUTTING CONDITION	DWG. NO.	STRA-3		AGENCY		
ROUGHNESS	T.J.R. PRESSION (N)	CODE NO.			USER		
PARALLELISM	T.J.R. FEED (f)			DATE			
SQUARENESS	T.J.R. DEPTH OF CUT (t)						
FLATNESS	T.J.R. DEPTH OF CUT (t)						
CYLINDRICITY	T.J.R. MATERIAL						
	T.J.R. HARDNESS						
SCALE		1:1		Approved		Checked	
				Designed		SAMBULLY	