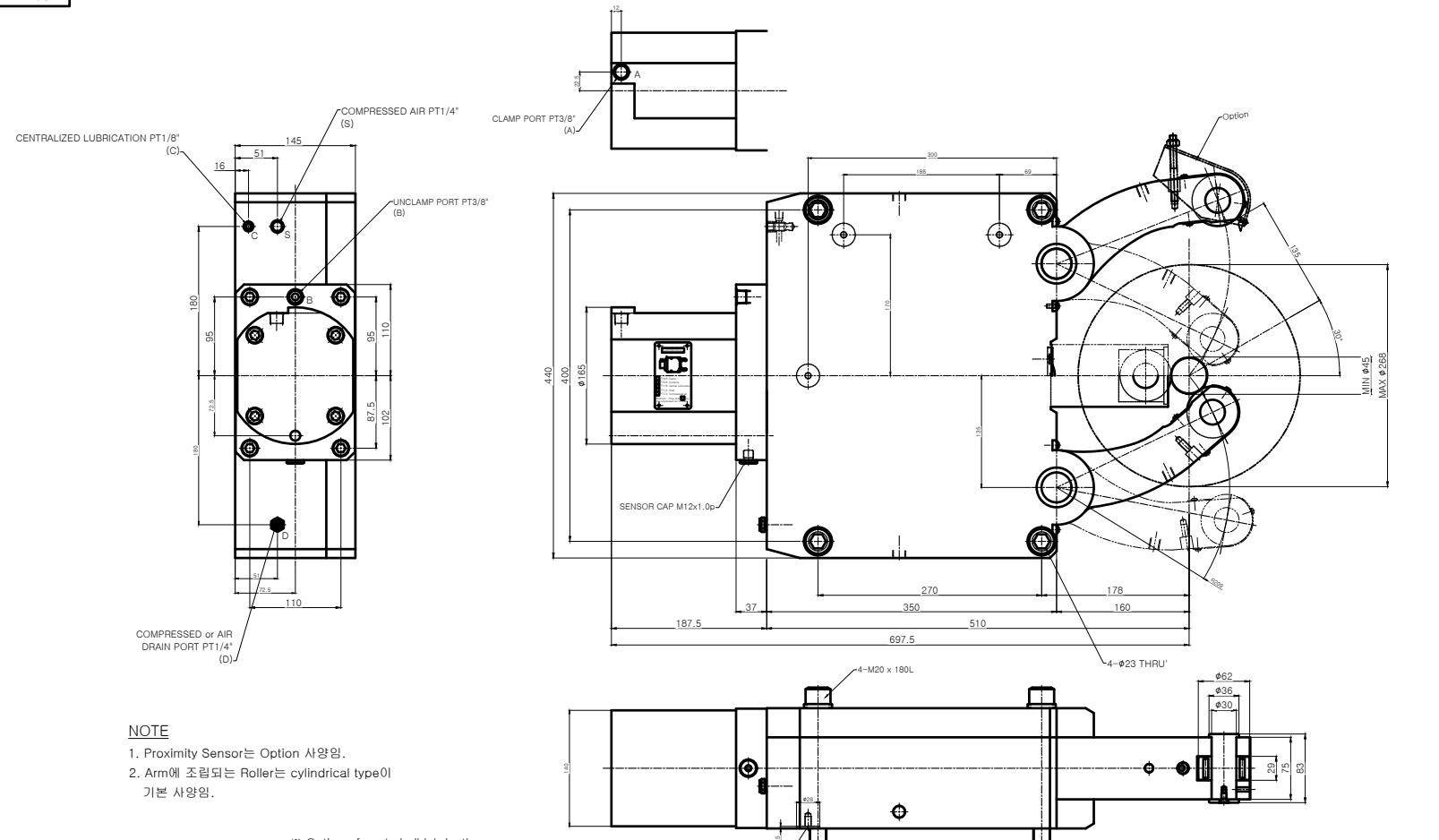


A0x1.5



NOTE
 1. Proximity Sensor는 Option 사양임.
 2. Arm에 조립되는 Roller는 cylindrical type이 기본 사양임.

SPECIFICATION	
CENTERING RANGE	φ45-φ268 mm
PISTON AREA	78 mm ²
OPERATING PRUSSURE	8-80 kgf/cm ²
MAX. CLAMPING FORCE/ROLLER	2000 kgf
CENTERING ACCURACY WITHIN THE WHOLE RANGE	0.06 mm
REPEATABILITY ACCURACY	0.01 mm
MAX. ROLLER SURFACE SPEED	700 m/min
MASS APPROX	152 kg

* Option of central oil lubrication
 - Oil : ISO VG68
 - For heavy working conditions and high build up of swarf
 - Lubrication intervals 2 ~ 5 min
 - Operating pressure Min. 10 bar, Max. 40 bar
 - The use of our separate complete lubrication unit with timer control is recommended

APPLICATION WORK	NO.	ASS'Y	STD	STRA-5	1SET
MACHINE SPEC		TITLE OF ITEM	MATERIAL	SIZE & SPEC	QTY
OPERATION		TITLE	STEADY REST (STRA-5)	PART NAME	ASSEMBLY DRAWING
ACCURACY		DWG. NO.	STRA-5	AGENCY	
ROUGHNESS	T.J.R. SURFACE FINISH (N)	CODE NO.		USER	
PARALLELISM	T.J.R. DEPTH OF CUT (t)			DATE	
SQUARENESS	T.J.R. FEED (f)				
FLATNESS	T.J.R. SURF. FINISH (kg/mm ²)				
CYLINDRICITY	T.J.R. MATERIAL	SCALE			
	T.J.R. HARDNESS	1:1	Approved	Checked	Designed

