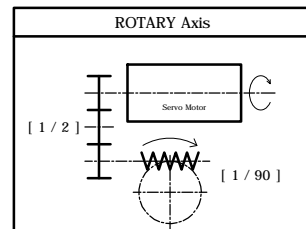
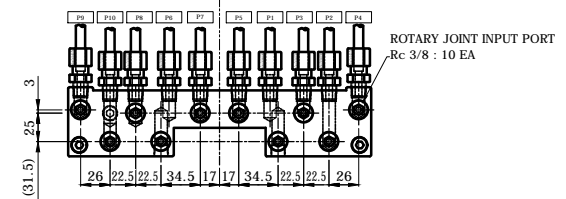
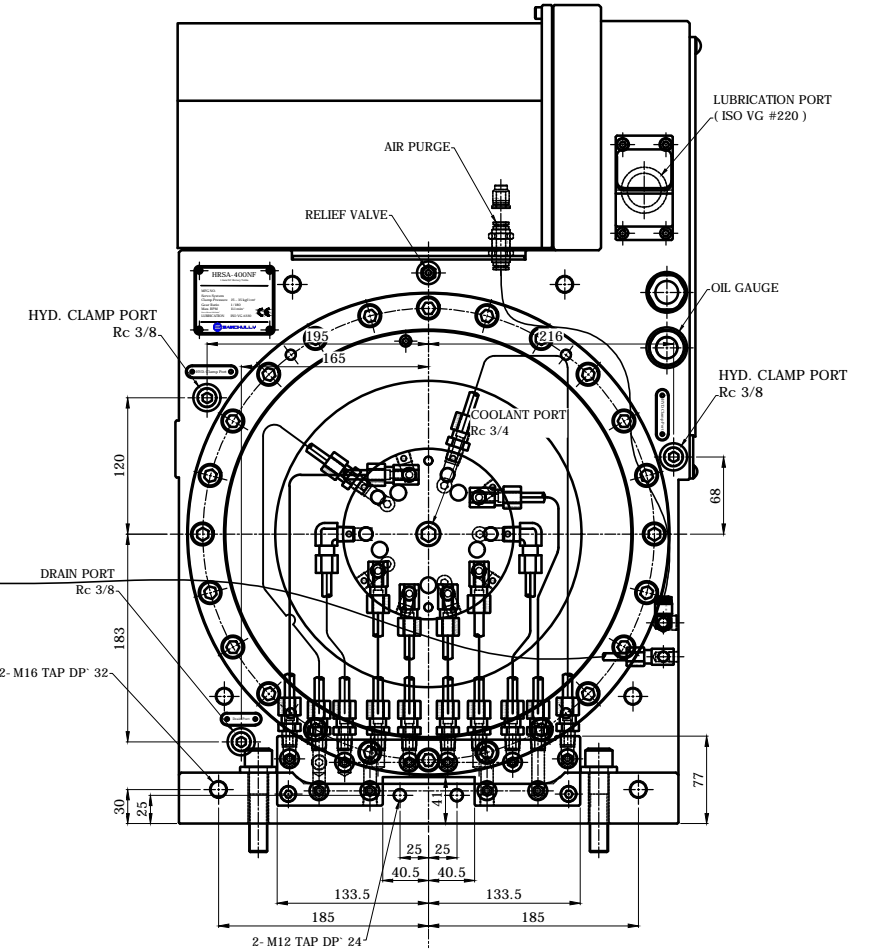
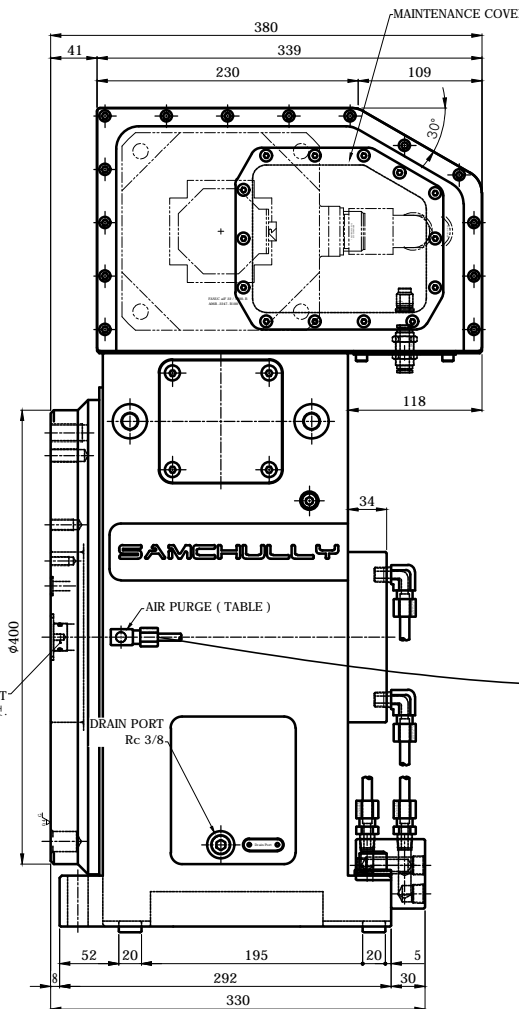
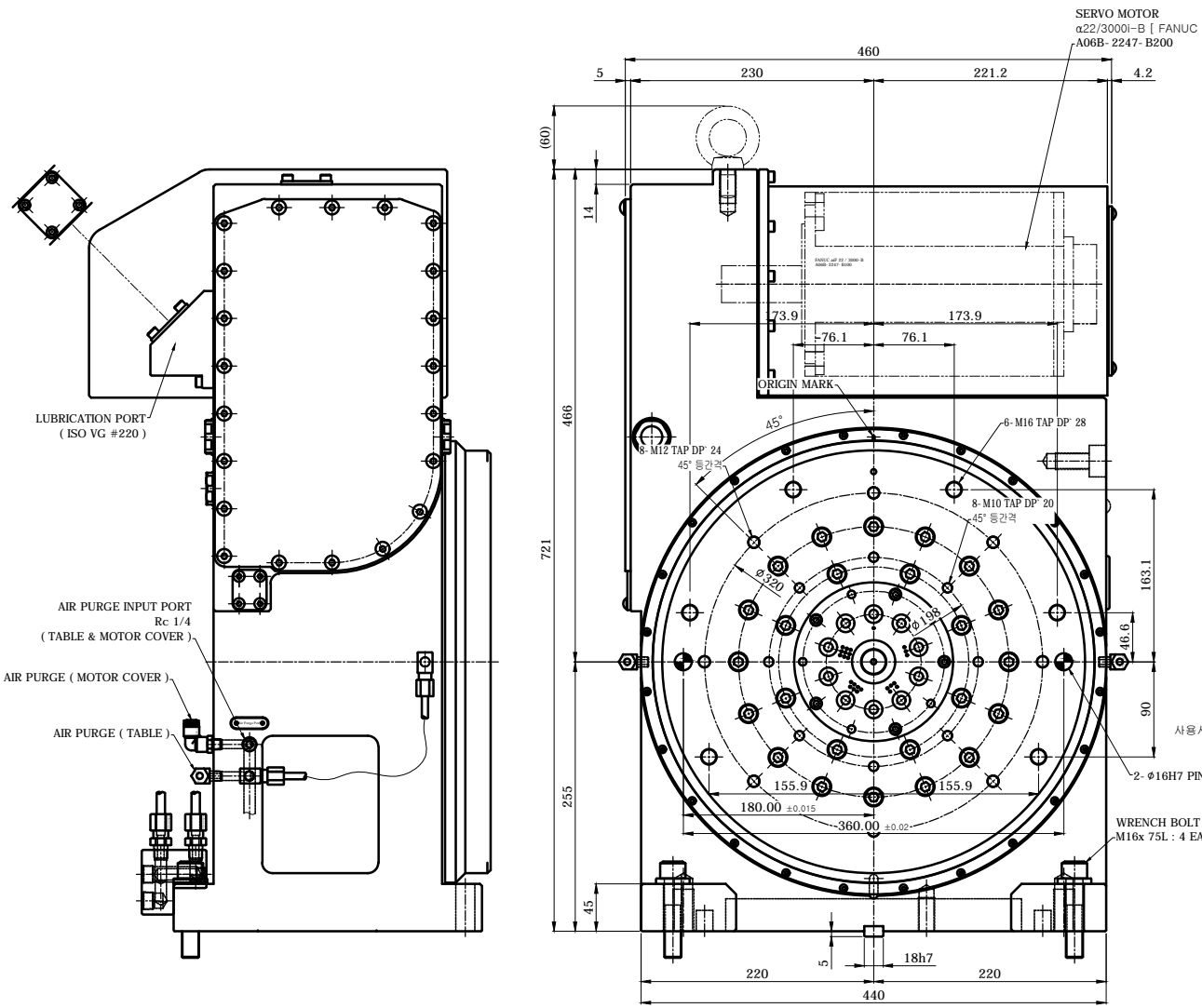
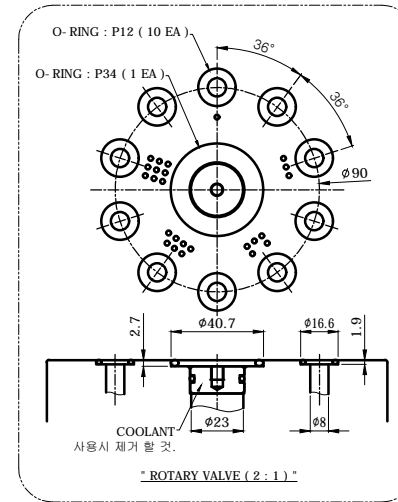
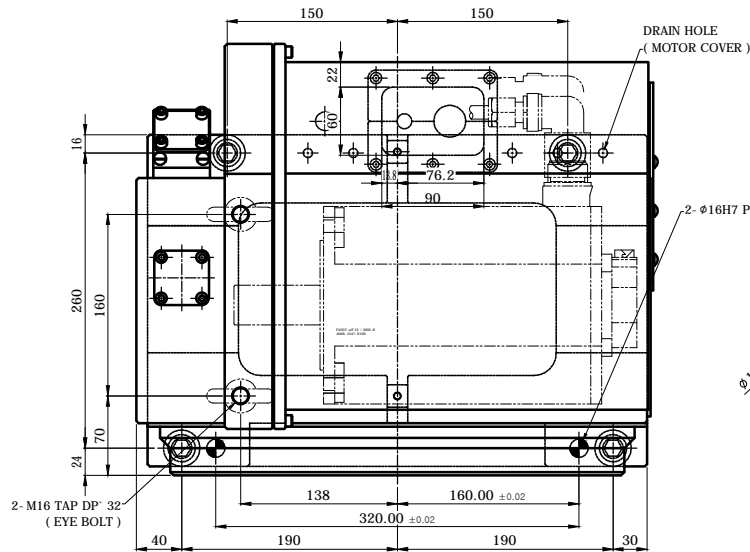


변경 사항			
기호	변경 내용	날짜	수정 승인



SPECIFICATION			
테이블 직경 Diameter of Table	φ400 mm	기어비 Total Reduction Ratio	1 / 180
센터 높이 Center Height	255 mm	최대 회전 속도 Max. Rotation Speed	11.1 min ⁻¹
가이드 블록 Width of Guide Block	188.7 mm	로타리조인트 포트 Rotary Joint Port	10 + 1 [옵션 사항]
최소 각도 단위 Min Increment	0.001°	제품 무게 NET WEIGHT	430 kg
클램프 방식 Clamp Method	Hydraulic / Disk	분할 정밀도 INDEXING ACCURAC	25 sec
적용 압력 Pressure Range	Max. 50 kgf/cm ²	반복 정밀도 REPEATABILITY	5 sec
클램프 토크 Clamp Torque	3500 N.m [35 kgf/cm ²]	최대 허용 하중 MAX. Load	450 kg
모터 축 관성 모멘트 Inertia at Motor Shaft	0.0120 kg · m ²	최대 워크 관성모멘트 MAX. Work Inertia	8.8 kg · m ²
서보 모터 Servo Motor	α22/3000I-B [FANUC] A06B-2247-B100		

유압 적용 압력 [50 bar , 50 kgf/cm²]
" 도번 변경 : HRSA- 400NF22- R10.1- 50H "

TITLE	NC ROTARY TABLE	PART NAME	외 형 도
DRG NO.	HRSA- 400NF22- R10.1- 50H- 00	USER	
CODE NO.		DEPARTMENT	Research & Development
		DATE	2021. 12. 01
SCALE	1 : 1	Approved	Checked
		Designed	

