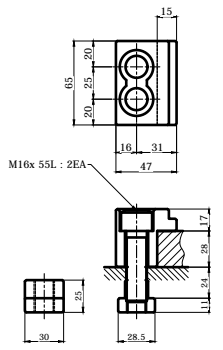
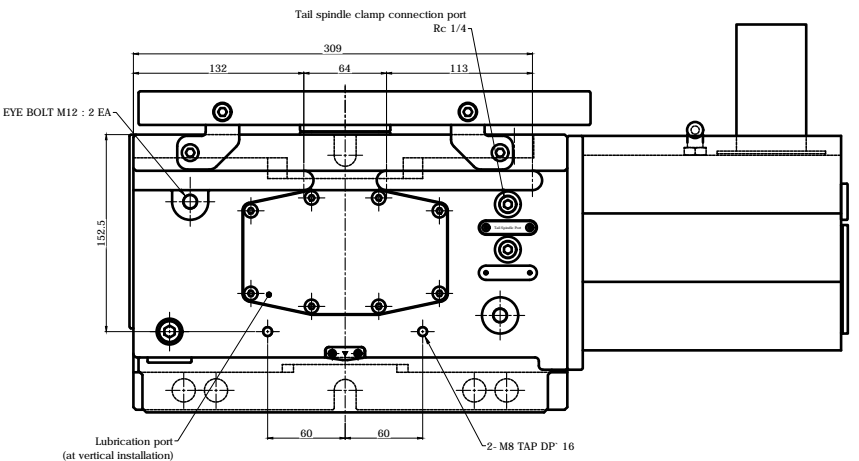
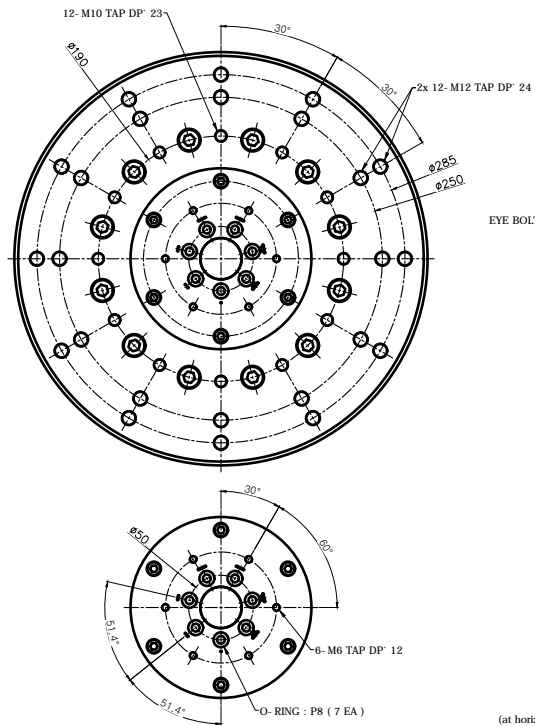


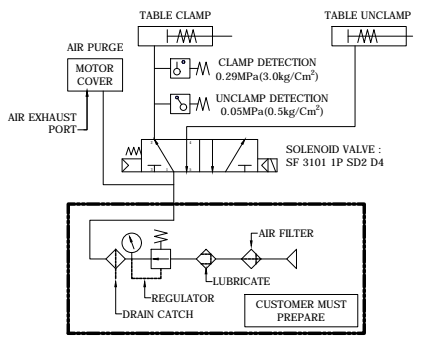
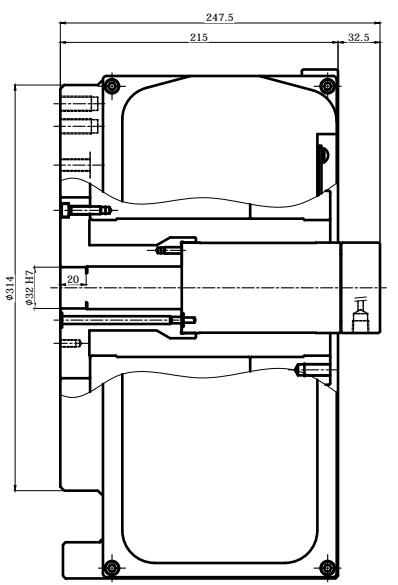
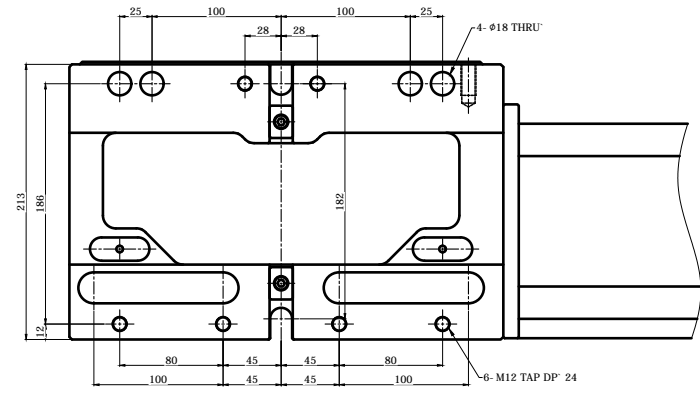
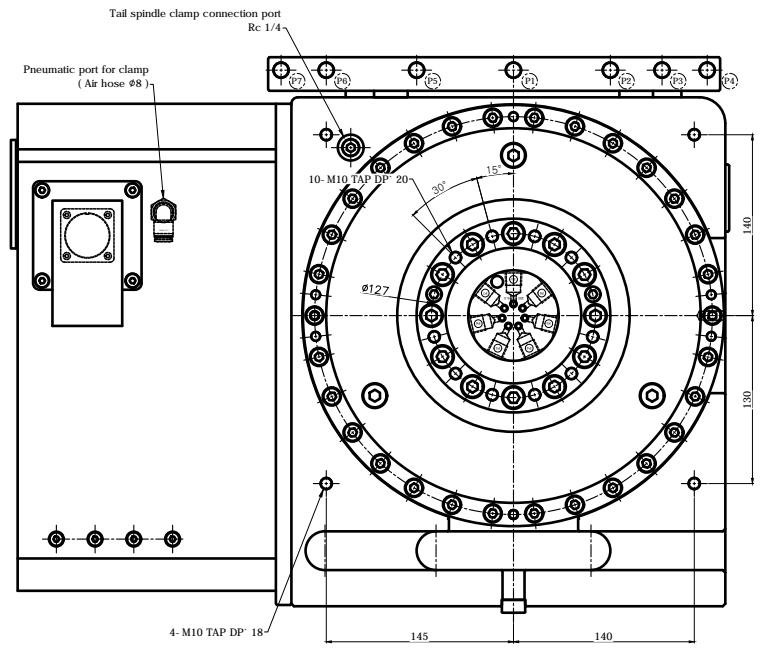
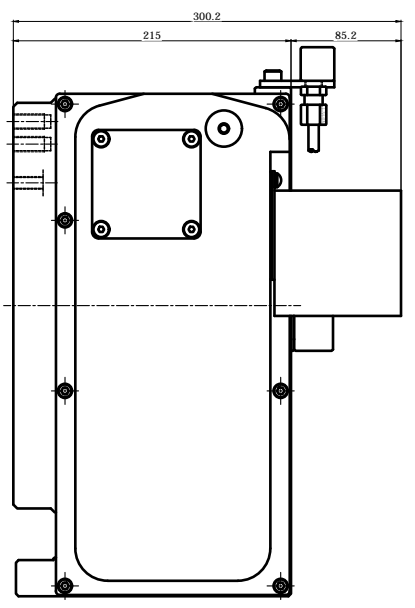
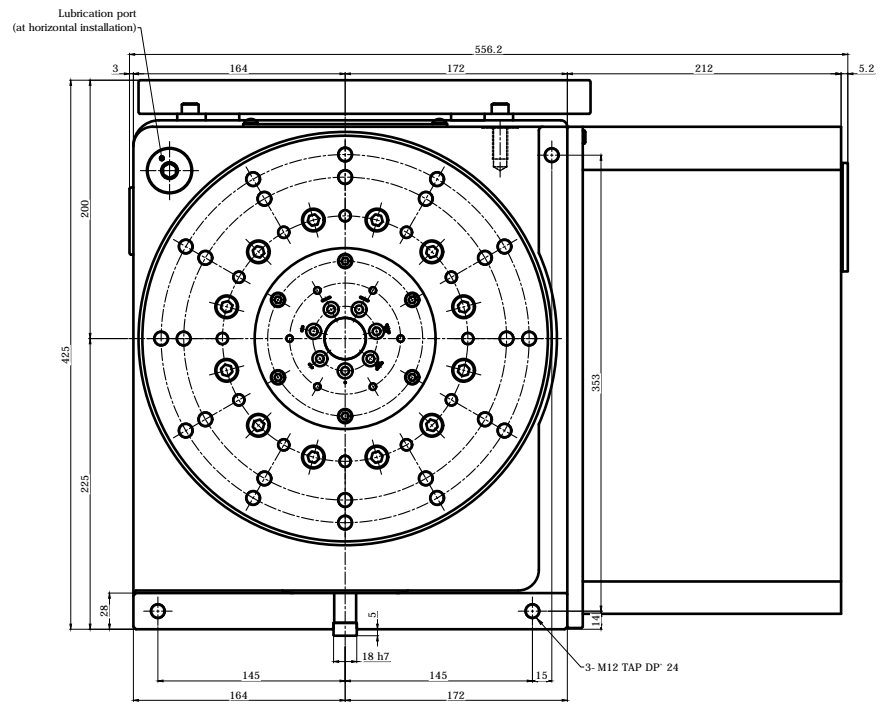
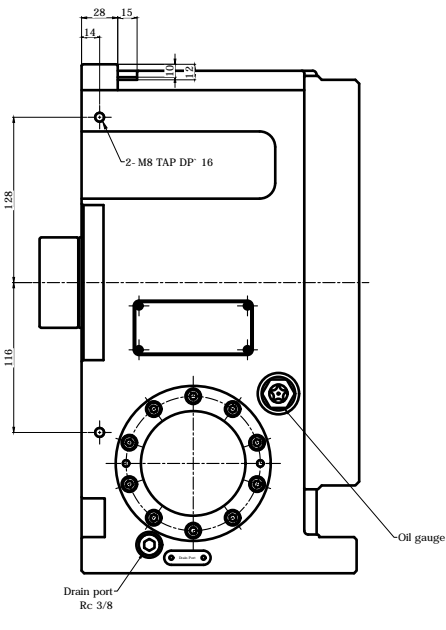
기호	변경 사항	날짜	수정	승인
△	변경 내용			

Vertical (수직형) Type

< 7-Port Rotary Joint >



[B Type] ACLAMPING PARTS ACCESSORY 4 PAIR



SPECIFICATION	
테이블 직경	Table Diameter
테이블 높이	Center Height
기준 직경	Reference Diameter
스피드 통과 직경	Spindle Through Hole Diameter
클램프 방법	Clamp Method
허용 가능한 무게	Allowable Work Inertia
클램프 토크	Clamp Torque
최대 속도	Max. Spindle Speed
기어비	Gear Ratio
중량	Weight
기어 윤활	Gear Lubrication
허용 가능한 무게	ALLOWABLE MASS OF WORK

[Rotary Joint Specifications]	
Temperature	MAX. 80°C
Hydraulic	MAX. 200 kgf/cm ²
RPM	MAX. 50 RPM
PORT	7 PORT

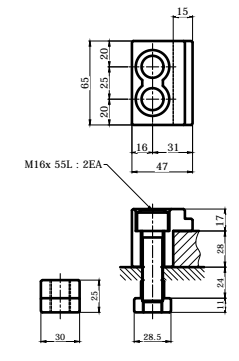
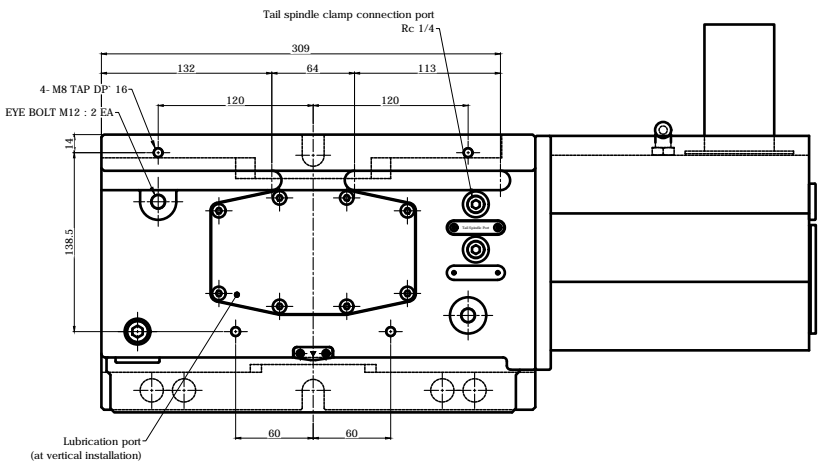
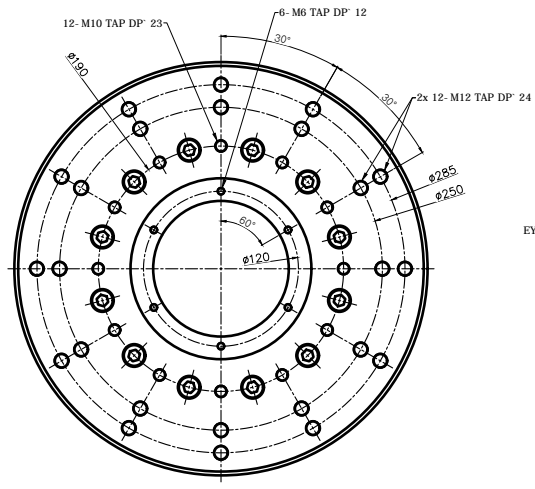
TITLE	RGC: Nc Rotary Table	PART NAME	회전대
DRG. NO.	RF-320Y8 - Rotary Joint	USER	
CODE NO.		DEPARTMENT	Research & Development
SCALE		DATE	2020.11.30
1	Approved	Checked	Designed



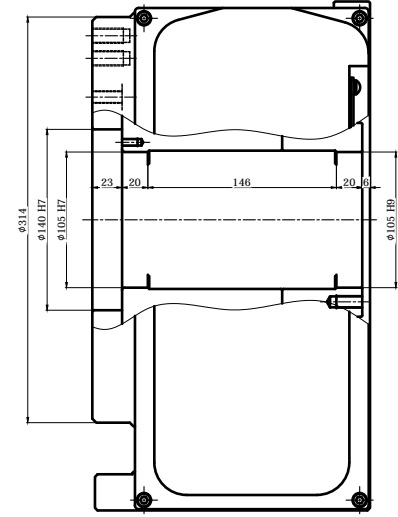
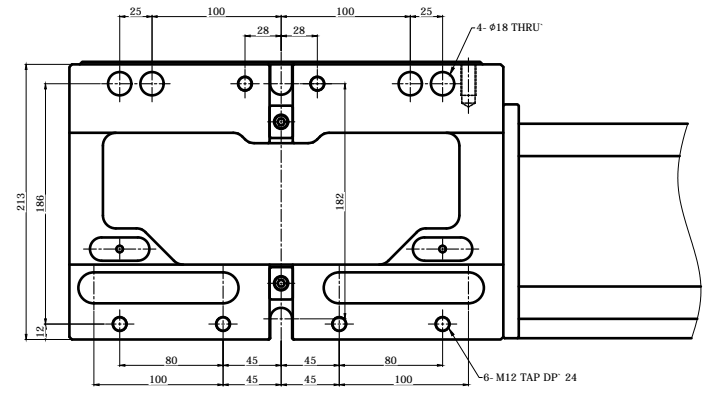
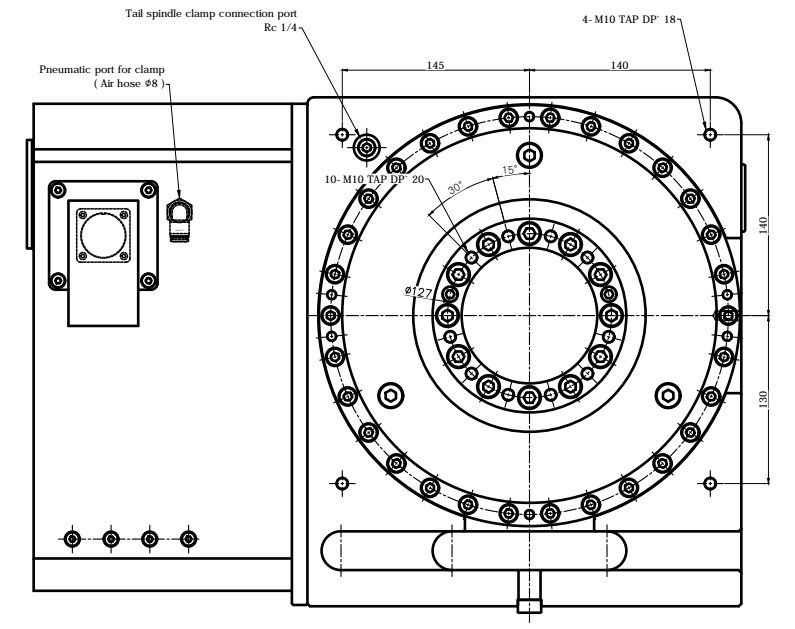
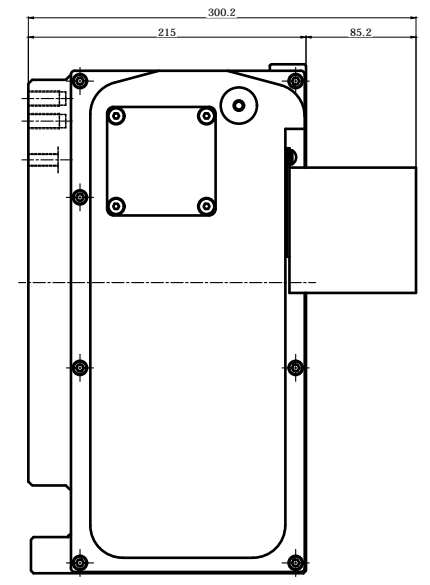
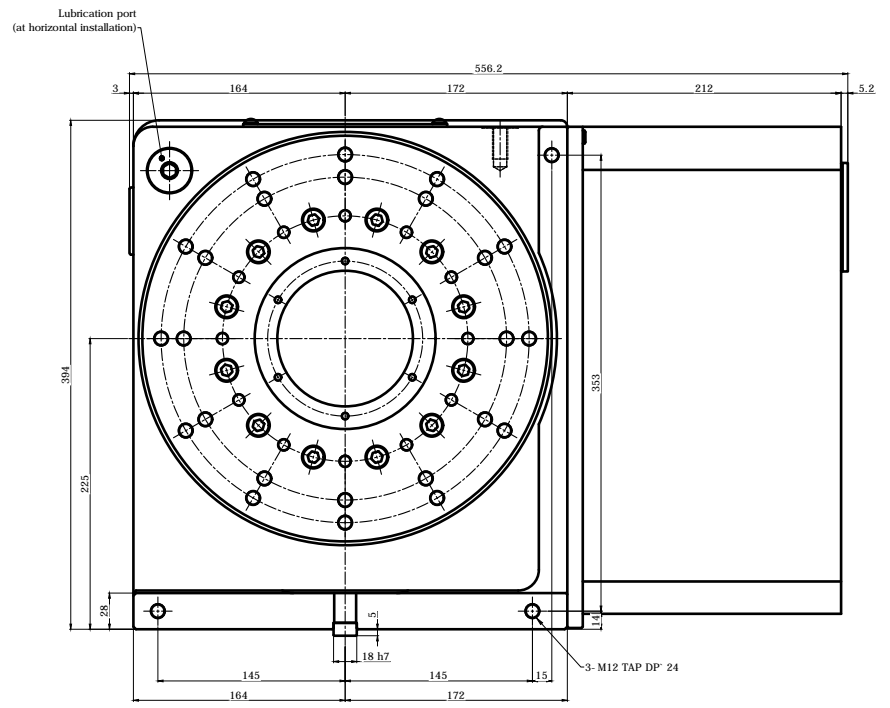
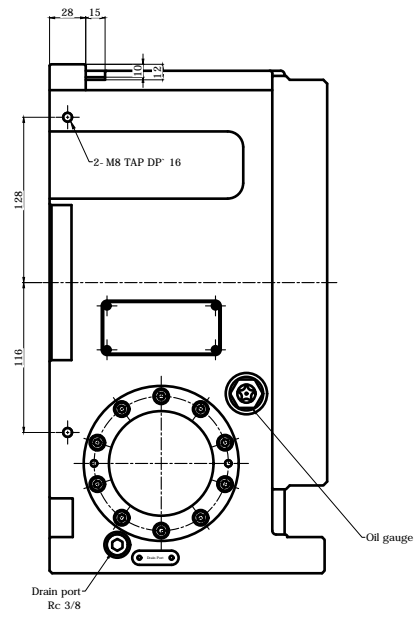
기타	변경 사항	날짜	수정	승인
△	변경 내용			

Vertical (수직형) Type

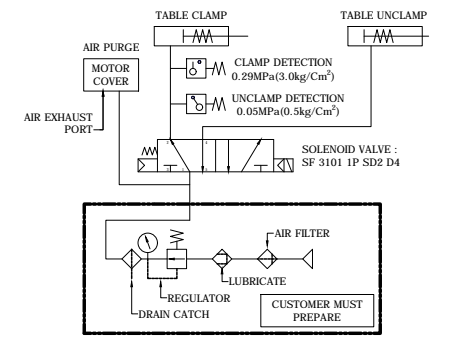
< Rotary Joint 미 적용 >



L B Type 1 ACLAMPING PARTS ACCESSORY 4 PAIR



SPECIFICATION		
테이블 직경	Table Diameter	φ314 mm
센터 높이	Center Height	225 mm
테이블 내경	Table Inner Diameter	φ140 H7
스피드 홀 직경	Spindle Through Hole Diameter	φ105 H7
클램핑 방법	Clamp Method	Pneumatic 5 ~ 7 kgf/cm ²
허용 작업 중량	Allowable Work Inertia	4.40 kg·m ²
클램핑 토크	Clamp Torque	- N·m
최대 속도	Max. Spindle Speed	41.60 min ⁻¹ (REVOLUTION PER MINUTE)
기어비	Gear Ratio	1 / 72
중량	Weight	- kg
기어 윤활	Gear Lubrication	ISO VG #150
허용 가능 작업물 무게	ALLOWABLE MASS OF WORK	180 kg VER. 1

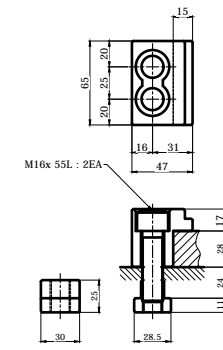
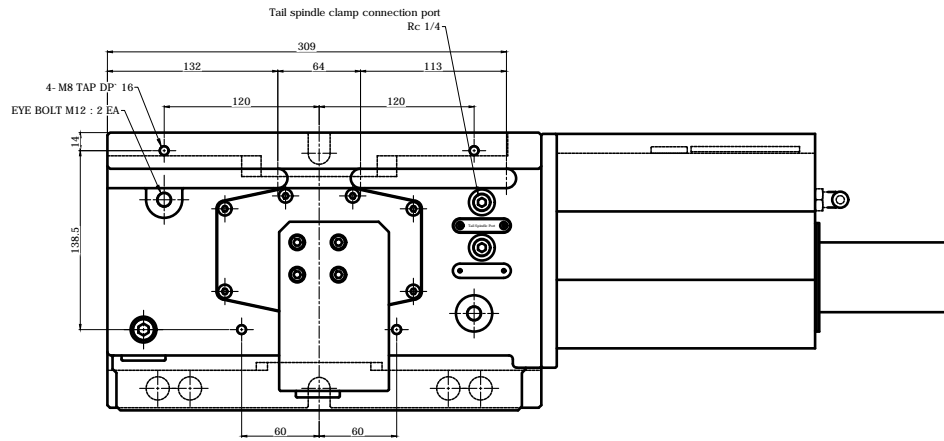
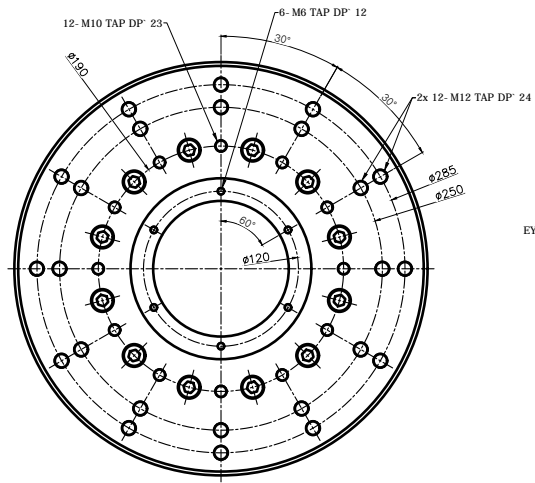


TITLE	RGC: No Rotary Table	PART NAME	회전대
DRG NO	RF-320Y8	USER	
CODE NO		DEPARTMENT	Research & Development
SCALE	1:1	DATE	2020.11.30
APPROVED		CHECKED	
DESIGNED		DESIGNED	

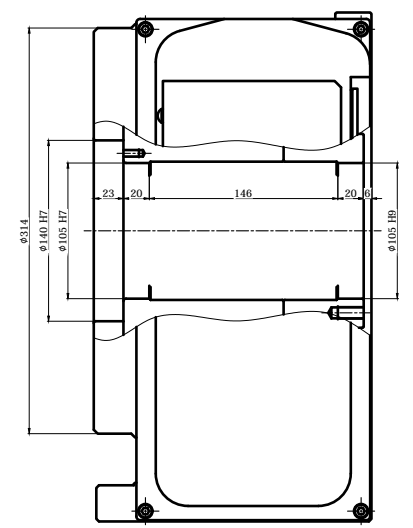
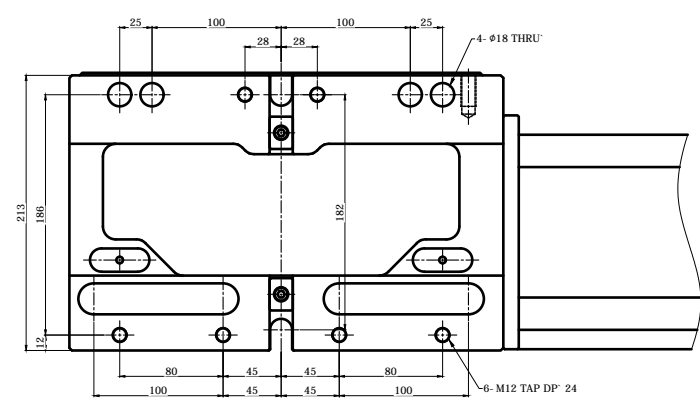
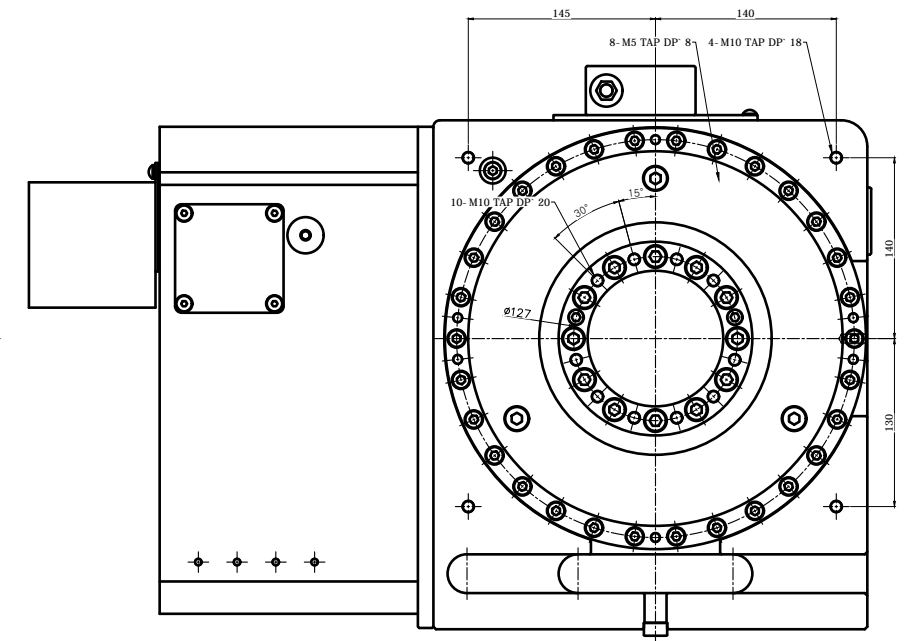
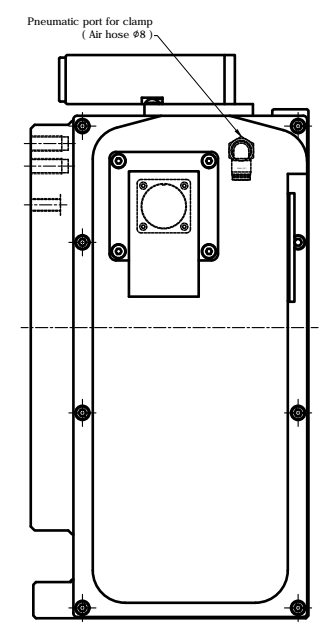
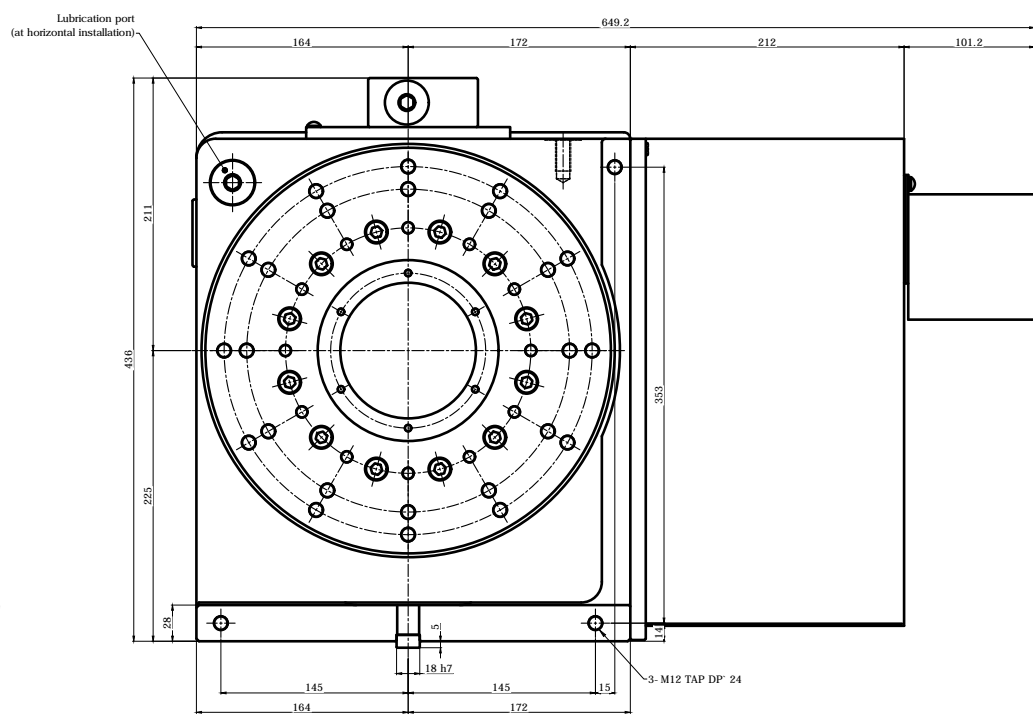
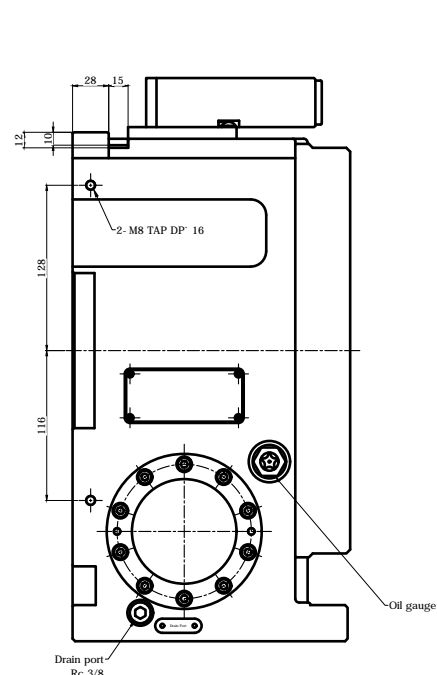


기호	변경 사항	날짜	수정	승인
△	변경 내용			

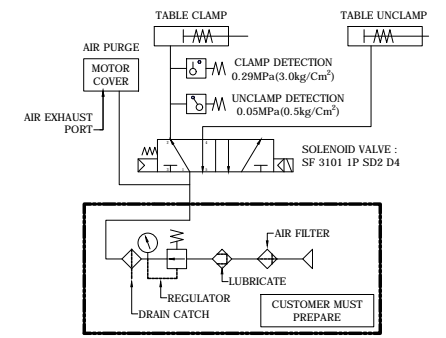
Horizontal (수평형) Type



L B Type 1 ACLAMPING PARTS ACCESSORY 4 PAIR



SPECIFICATION	
테이블 직경	Table Diameter
테이블 높이	Center Height
테이블 내경	Table Inner Diameter
공통구	Spindle Through Hole Diameter
공급 방법	Clamp Method
허용 작업 중량	Allowable Work Inertia
클램프 토크	Clamp Torque
최대 회전 속도	Max. Spindle Speed
기어비	Gear Ratio
중량	Weight
기어 윤활	Gear Lubrication
허용 작업 시간	ALLOWABLE WORK TIME



TITLE	RGC: Nc Rotary Table	PART NAME	수평형
DRG. NO.	RF-320YR - Horizontal	USER	
CODE NO.		DEPARTMENT	Research & Development
SCALE	1:1	DATE	2020.11.30
APPROVED	Checked	Designed	

